



SUNNYSIDE ALLOTMENT SOCIETY NEWSLETTER

www.sunnysideallotments.org.uk
email: info@sunnysideallotments.org.uk

No: 3 July 2019

Editor's Note

Welcome to the summer issue of our Sunnyside newsletter. As Open Day approaches the preparations are already starting, and you will soon be seeing our bright yellow posters around the town. In this issue, Kate outlines the jobs to be done and the help needed to make the day a success. Cynthia and Jamie will be looking for donations of gardening tools and equipment for their stall. And from me, a plea for you to please pot up or otherwise save some plants for the plant stall; herbs are always particularly popular, if you can propagate any in the next few weeks. Please look after your own plants up to the week of the Open Day, as if everyone brings me their plants any earlier, I will be overwhelmed!

Thanks,
Lin Phillips,

Editor, A18 lin@sunnysideallotments.org.uk 07835 623981

Chairman's Notes

The weather has been an unusual mixture of downpours and sun, so watering has sometimes been necessary. For advice on how to conserve water, please refer to watering guidance http://www.sunnysideallotments.org.uk/Downloads/water_tips.pdf

If you have a hose licence, please be careful to turn off taps - and direct water at the roots rather than spraying widely.

As well as harvesting fruit and veg, please keep weed seeds under control as far as possible by pulling weeds before they have a chance to flower and blow their seeds onto surrounding gardens.

Finally, the Council is still looking for a cost-effective method of deer control. If you are experiencing deer problems, please report it to a member of the Committee.

Good gardening,
John Eaton

Jam Today!

The fruit harvest is good this year, and the jam-makers amongst us are busy turning produce into beautiful jars of jam, jelly, and preserves of all sorts. People can get very inventive with chutney in years of runner bean and courgette gluts!

The stall laden with jars of produce at Open Day is one of the most popular with visitors, so please make a contribution of few extra jars from your own jam- and chutney-making sessions.



Use it or Lose it!

Sad to hear that Wood's Garden Centre in Berkhamsted is threatened with closure. It would be a real loss to the High Street if this long-established shop, with its knowledgeable and helpful staff were to close, particularly for those without cars.

So, if you value Woods, it's important to support the business while it's open. As the saying goes, use it or lose it!

Untidy gardens and reminder of the eviction process

As a condition of our holding an allotment, we as tenants are required to keep plots in a tidy condition. The Council requires plots to be inspected three times every summer by representatives of the Sunnyside Committee, who must report any plot where there appears to be no evidence of its being cultivated. The Council then sends a first warning letter to those listed, and if necessary a second letter following the next inspection. If after the third inspection there has still been no improvement, the Council sends a letter terminating the tenancy.

Often, tenants may have been under some temporary difficulty and, following receipt of the first letter, they are at least able to make a start. Alternatively, the letter may prompt the tenant to make the decision that it is time to give up their plot, or to take on a smaller one. Do speak to a member of the Committee if you are having any such difficulties.

Seed orders

If you are a paid-up member of the Sunnyside Allotment Society, you will be receiving the King's seed catalogue in September. Our bulk ordering system means that you will get your seeds and sundries at a greatly discounted price, as well as making some money for the Society. The catalogue is full of handy tips for successful sowing and growing, as well as offering a wide range of seeds and other gardening items. Andy, our Treasurer, manages the order and delivery process – the details will be tucked into your copy of the catalogue.

Offer to Tenants

I have recently acquired a trailer which any member may use for collecting items, even manure, so long as any damage is covered by the user and an amount is given to charity.

Keith Gibson, SSN 7 (07786241748)

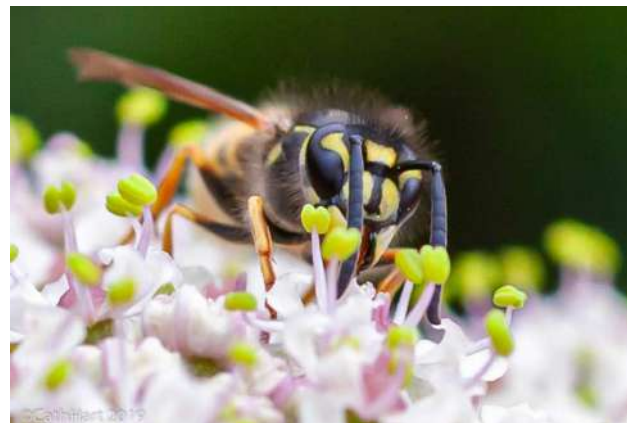
Your Current Committee Members

Chairman:	John Eaton	865307
Secretary:	Jenny Sippings	865890
Treasurer:	Andy James	865061
Newsletter Editor:	Lin Phillips	862882
Other members:		
	Angela Wheeldon	874440
	John Goffey	864967
	Diana Ball	875277
	Geoff Halls	878176
	Kate Rankin	866827
	Jeanne Woodcraft	872852

You can email any member of the committee by putting their first name in front of: @sunnysideallotments.org.uk apart from John Eaton who is: johne@ and John Goffey who is: johng@



From our Facebook page—Cinnebar caterpillar by Cath Hart



Re-using aluminium foil

In case some of you would like to make sure your scrap aluminium food trays and cans get recycled reliably and profitably, Sunnyside Church collects clean ally and gets a good price for it through a specialist scrap merchant. I keep all mine and fold or squash the trays together, and every couple of months I take it up. They have collection boxes under the seat in their porch.

I do this because aluminium takes a lot of energy, carbon cost and pollution to extract and convert from bauxite. Plus, it's still a remarkable metal in many ways - it allows you to fly to see your loved ones on the other side of the world. So it's a crime to bury the raw material back in the ground, as amongst other reasons it can be toxic as a 'heavy metal', surprisingly.

Clive Smith, A13



My new blue wall: a creative way to use pallets, and stones too, for a Mediterranean effect. Will Facey

Asian Hornet threat comes to southern England

The 'Asian hornet' (or *Vespa velutina*) is an invasive non-native species from Asia. If you find one you must report it. It arrived in France in 2004 and has spread rapidly. As a highly effective predator of insects, including honey bees and other beneficial species, it can cause significant losses to bee colonies, other native species and potentially ecosystems.

It has been reported in some southern parts of England (it may be able to cross the channel from France, or accidentally imported with goods such as pot plants, cut flowers, fruit and timber), and is active between April and November (peak times August and September).



What to look out for

- *Vespa velutina* queens are up to 3 cm in length; workers up to 25 mm (slightly smaller than the native European hornet *Vespa crabro*)
- Entirely dark brown or black velvety body, bordered with a fine yellow band
- 4th abdominal segment almost entirely yellow/orange, and with yellowish legs
- Head black with an orange-yellow face

Unlike the European hornet, it is day-flying and ceases activity at dusk

If you think you have seen an Asian Hornet, please use the [Asian Hornet Watch app](#) on your phone to send a picture and a location via GPS in the app straight to the Non-native Species Secretariat and National Bee Unit. If you cannot download the Asian Hornet Watch app, please use this [online recording form](#), or send a picture and email with details of where you saw the Asian Hornet with your contact details to alertnonnative@ceh.ac.uk

(information taken from the British Beekeeping Association)

Tenancy Changes

Welcome to:

A4B	Carol Allison
A14	Brett Bates
A29A	Abigail Gatt
B20	Paul Ham
B21A	Jo Banks
B30B	Bev Hancock
B32A	Sunnyside Playgroup
N1C,D	Victoria Lajer
N10	Henry Ashton
N35B	Steve Poulton

Goodbye to:

A4B	Russell Evans
A14	Martin Reeder
A29A	Denise Griffiths
B20	Nigel Swatridge
B21A	Nanette Street
B30B	Sunnyside Playgroup
N5	Nicola Lockie
N11	Stephen Gilbert
N35B	Hilary Whitby
N51	Jennifer Hatt

Don't forget to check out our Facebook page, where members are increasingly posting great photos and comments on their successes (and challenges) on their plot.

Please join our group for allotment gardening chit chat.

<https://www.facebook.com/groups/1466477513362340/>



Discussion Members Photos Search this group



©CathHart 2019

Water droplets—Chris & Cath wedding photos

www.chrishobsonweddings.photos.co.uk

Please Note: To offset rising printing costs, an electronic version of future editions of the newsletter will be sent to all those people that supply an email address to Jenny Sippings – (jennysippings@virginmedia.com).



Sunnyside Allotment Society

OPEN DAY SUNDAY 11th AUGUST 2019

This year our Open Day takes place on 11th August from 11.00am to 4.00pm. It is a chance for local residents to visit and enjoy the allotments with us. There will be refreshments, plants, produce, preserves, gardening books and tools for sale.

We would like the allotments to look as attractive as possible on the day. Scarecrows and other bird scarers are very popular, and it would be good if you could spend some time on your plot during the day to give visitors a warm welcome and talk about your garden. The mowing contractors will be cutting the main roadways during the week before Open Day, but please could you cut back your own paths beforehand so that they are tidy and bramble-free and accessible to the public, as well as allowing the contractors to do a full-width cut.

VOLUNTEERS

Open Day will not function without volunteers, and an hour or two from lots of volunteers will make all the difference. There are a number of jobs that need doing before Open Day, eg: cleaning furniture, mowing and strimming of paths, and general tidying-up of communal areas and entrances. **If you are not going to be around on Open Day, please would you allow us to pick some produce from your plot?**

On the day we will need help with the setting-up in the morning, manning the stalls, helping with refreshments, meeting and greeting, and finally, clearing up afterwards.

DONATIONS

This year we are hoping for the following donations: plants, cut flowers, cakes and biscuits for refreshments, raffle prizes, fresh produce, preserves, small good quality tools and gardening and cookery books.

Plants can be delivered to **A16 or A18**, where Lin has kindly volunteered to look after them until Open Day. Preserves, raffle prizes, tools and gardening books can be left at the **Tea Hut (B15)** in the **week before Open Day**.

Fresh produce, cut flowers and cakes should be delivered to the Tea Hut before **10am on Open Day**.

If you can help please complete and return this form by **Friday 2nd August** to Kate Rankin at 7 Bedford Street or Tea Hut (B15) or email to katerankin39@hotmail.co.uk. Any questions, please do not hesitate to call me on 866827.

Thank you
Kate

Name:..... Plot No:..... Tel:.....
Email:..... Mobile:.....

Pre Open Day I can help with.....
I am available to help on.....

On Open Day I can help at the following times (please tick the box):

- | | | |
|--|--|--|
| <input type="checkbox"/> 9.00-11.00am (setting up) | <input type="checkbox"/> 11.00-12 noon | <input type="checkbox"/> 12 noon to 1.00pm |
| <input type="checkbox"/> 1.00-2.00pm | <input type="checkbox"/> 2.00-3.00pm | <input type="checkbox"/> 3.00-4.00pm |
| <input type="checkbox"/> 4.00-5.00pm | <input type="checkbox"/> Anytime | |

I can provide:

- | | | | |
|---|--------------------------------------|--|---------------------------------|
| <input type="checkbox"/> Cakes/biscuits | <input type="checkbox"/> Produce | <input type="checkbox"/> Preserves | <input type="checkbox"/> Plants |
| <input type="checkbox"/> Raffle Prize | <input type="checkbox"/> Small tools | <input type="checkbox"/> Gardening Books | |

You may pick the following produce from my plot:

Please return this form by **Friday 2nd August** to Kate Rankin